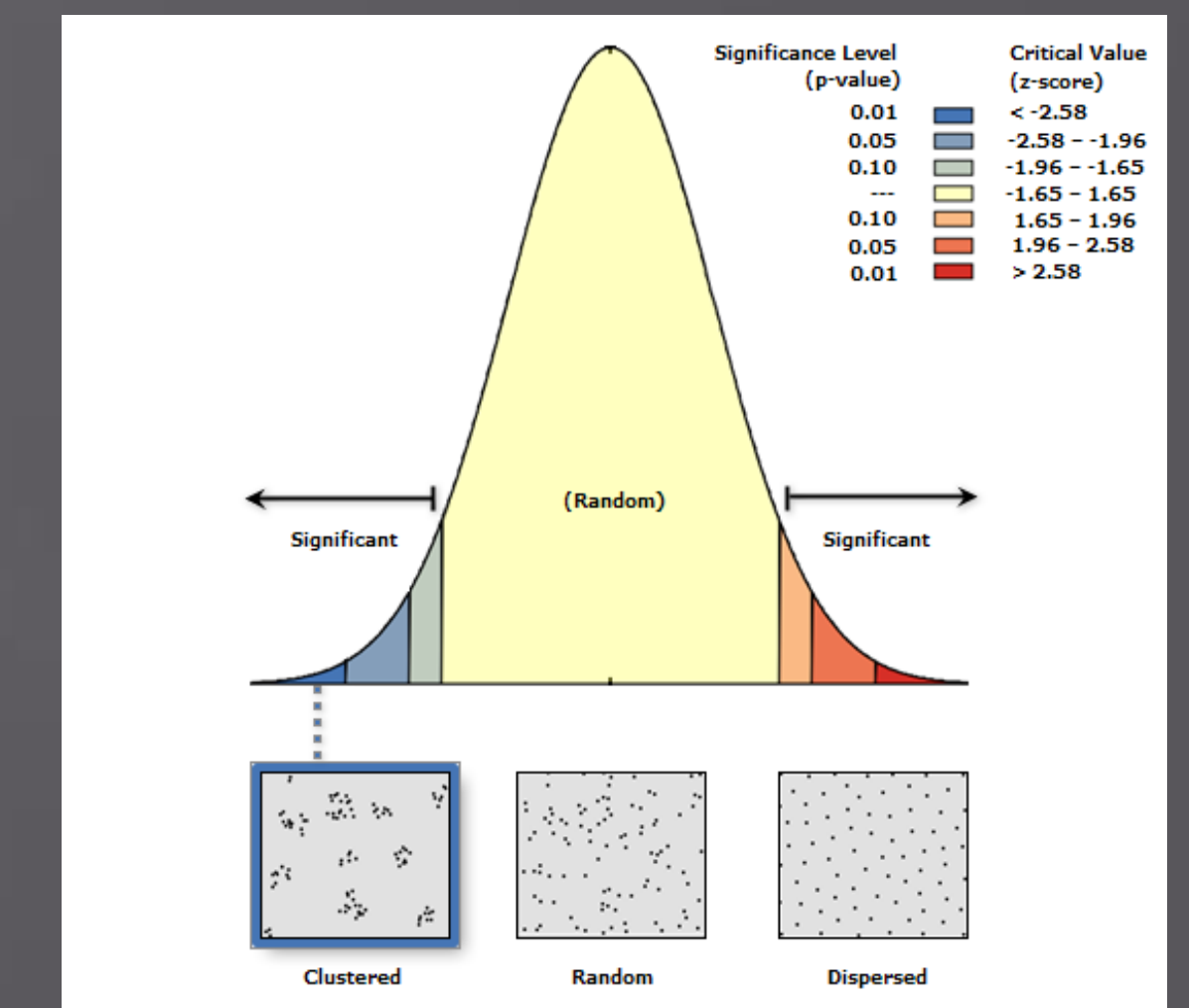
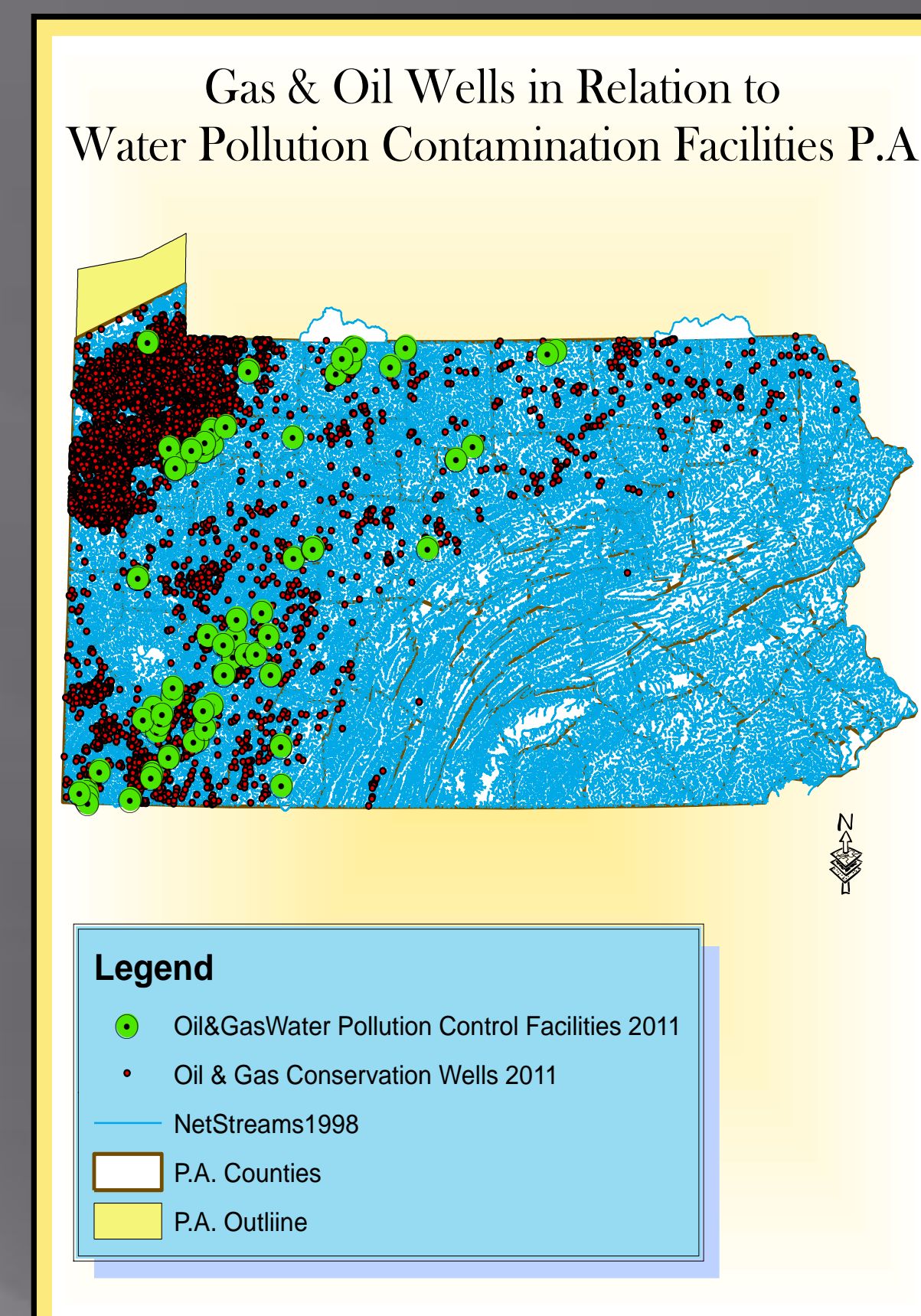
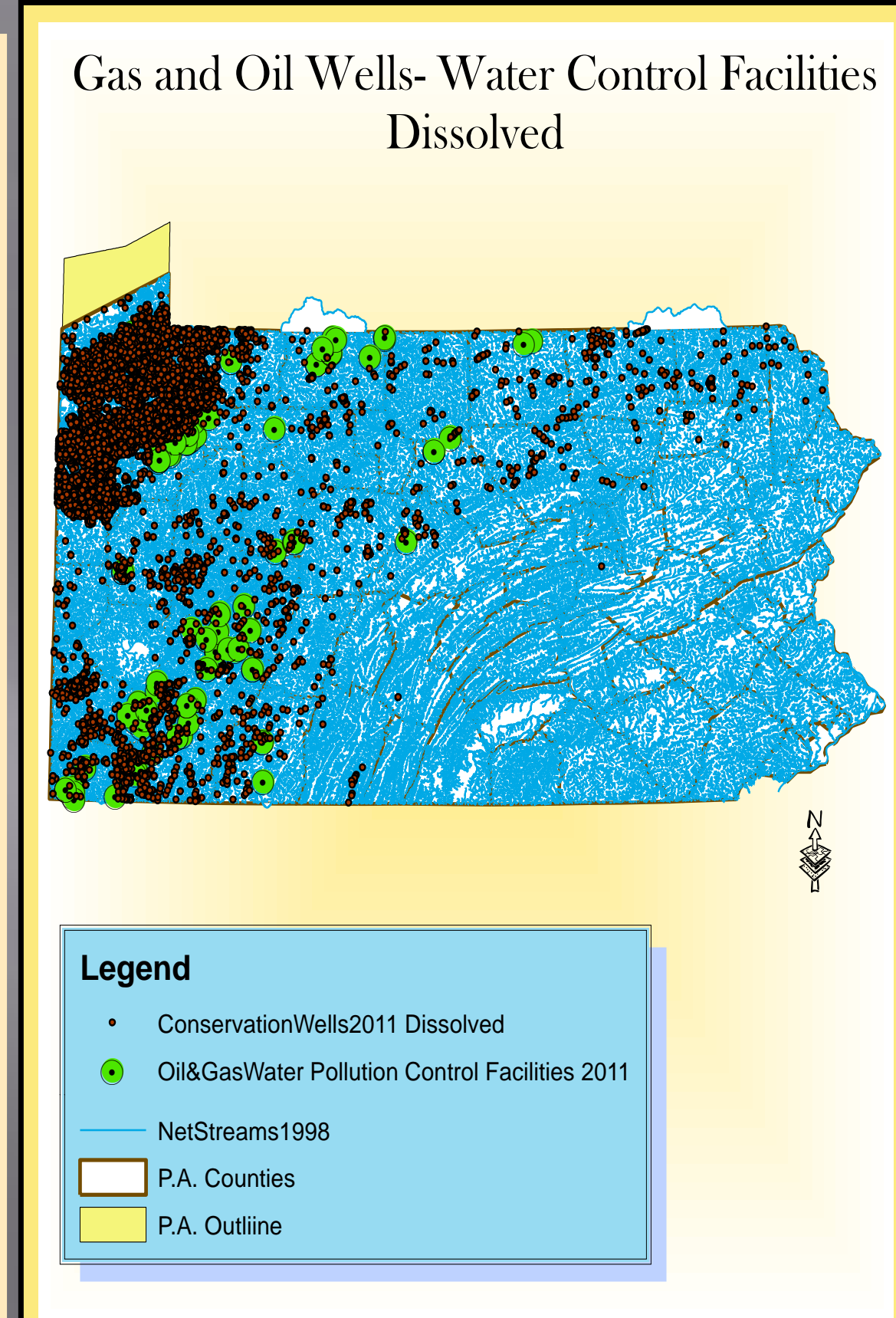
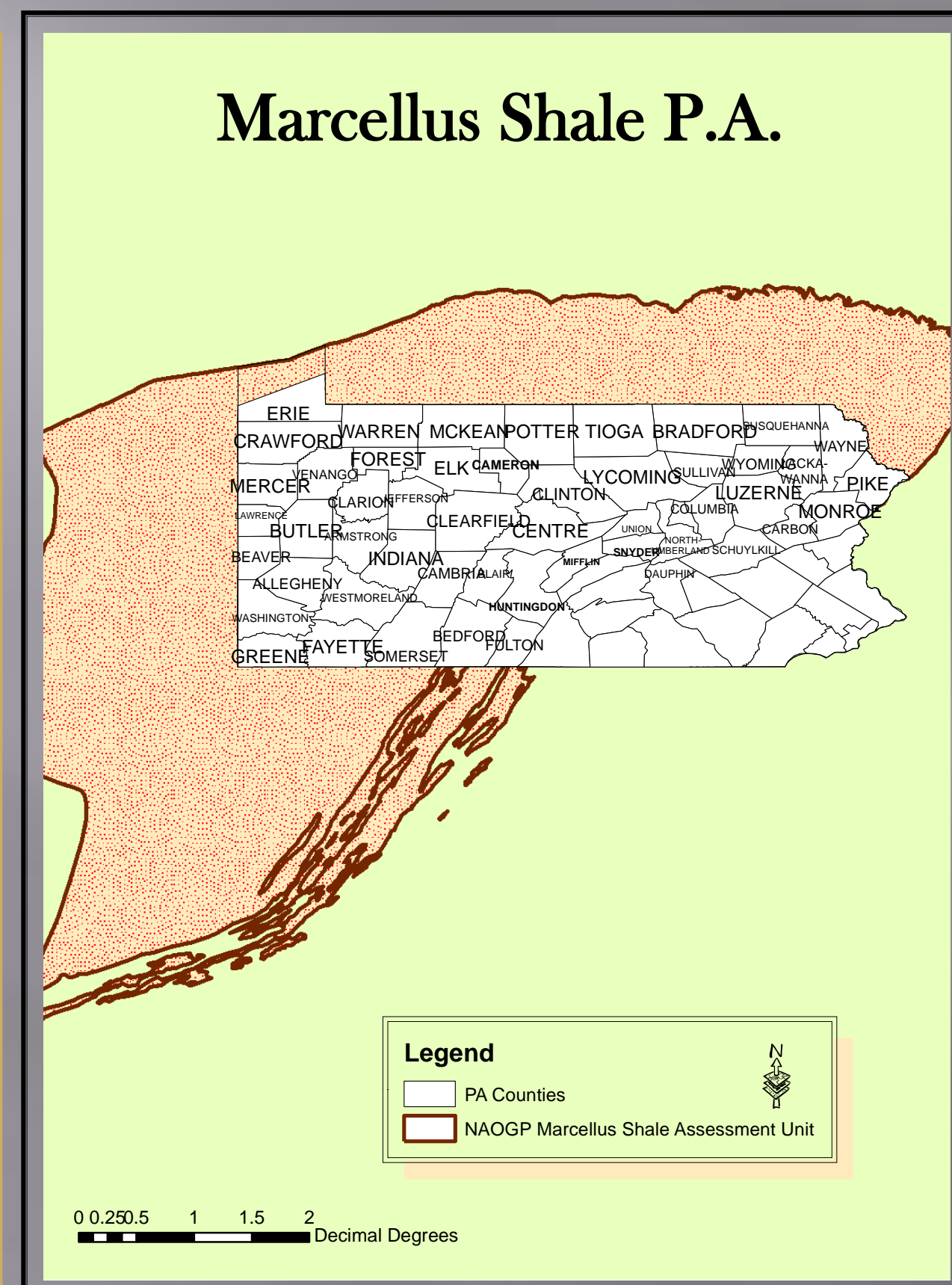


Gas and Oil Wells in PA: Poses Threat for the Contamination of Streams and Drinking Water



Data Sets:

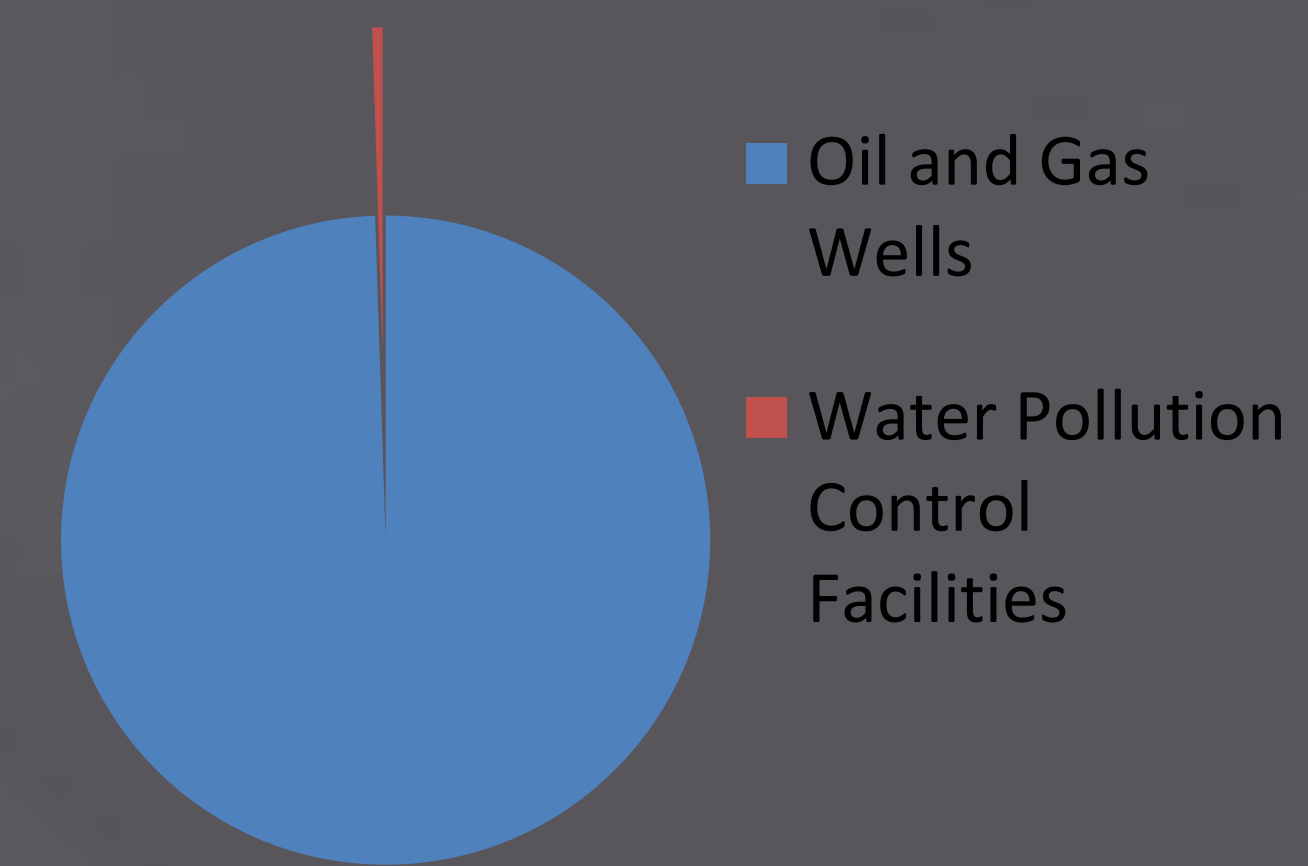
- PA state outline layer
- PA counties layer
- PA Marcellus Shale Layer
- Oil and Gas Well Layer
- Water pollution control facilities layer

Abstract: The extraction of gas and oil through hydraulic fracturing of Marcellus Shale is held accountable for the contamination of streams, ground water and drinking water.

Objective: There not enough water pollution control facilities compared to the vast quantity of gas and oil wells. Analyze and propose the addition of future water pollution control facilities.

Attributes:

- Spatial Statistics- analyzing patterns
- Dissolve Command



Gas and Oil Wells : 12,757
Water Control Facilities: 66



Randon Kersteen
Geo 324-02 Introduction to GIS
Fall 2011
Department of Geography and Planning