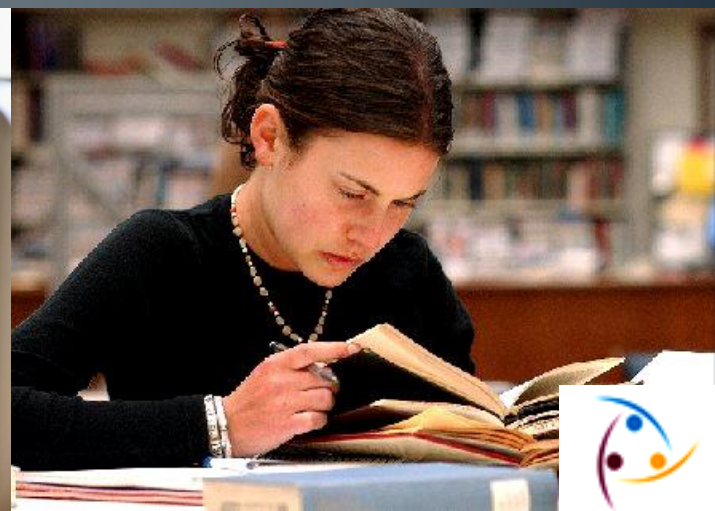
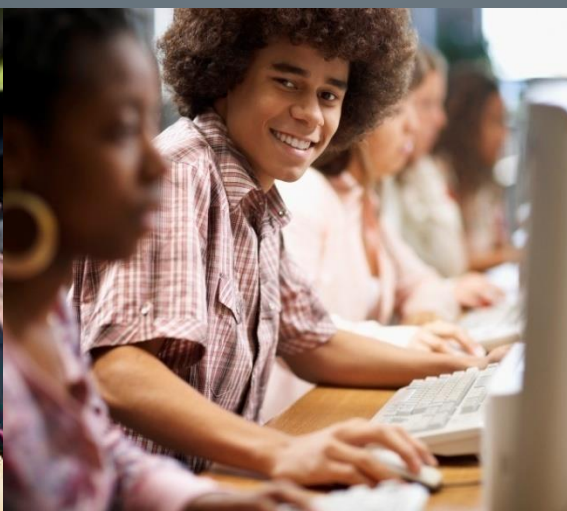




# National Survey of Student Engagement (NSSE) Results

Comparisons 2008/2010/2012

West Chester University



# What is NSSE and What Does it Measure?

- A survey that provides an annual snapshot of student engagement in programs and activities that institutions provide for their learning and personal development.
  - Results provide an estimate of how undergraduates spend their time and what they gain from attending college.
  - NSSE items represent empirically confirmed “good practices”; they reflect behaviors associated with desired outcomes of college.
    - 540 First Year
    - 955 Seniors

# NSSE Results

- Are **diagnostic**; to help institutions look holistically at undergraduate experience
- Help **pinpoint** aspects not in line with mission, or what institution expects
- Identify **weaknesses and strengths** in educational programs
- Help institutions know what to **focus on to improve** student learning and success

# NSSE Indicators of Effective Educational Practice

**Level of Academic  
Challenge**

**Active &  
Collaborative  
Learning**

**Enriching  
Educational  
Experiences**

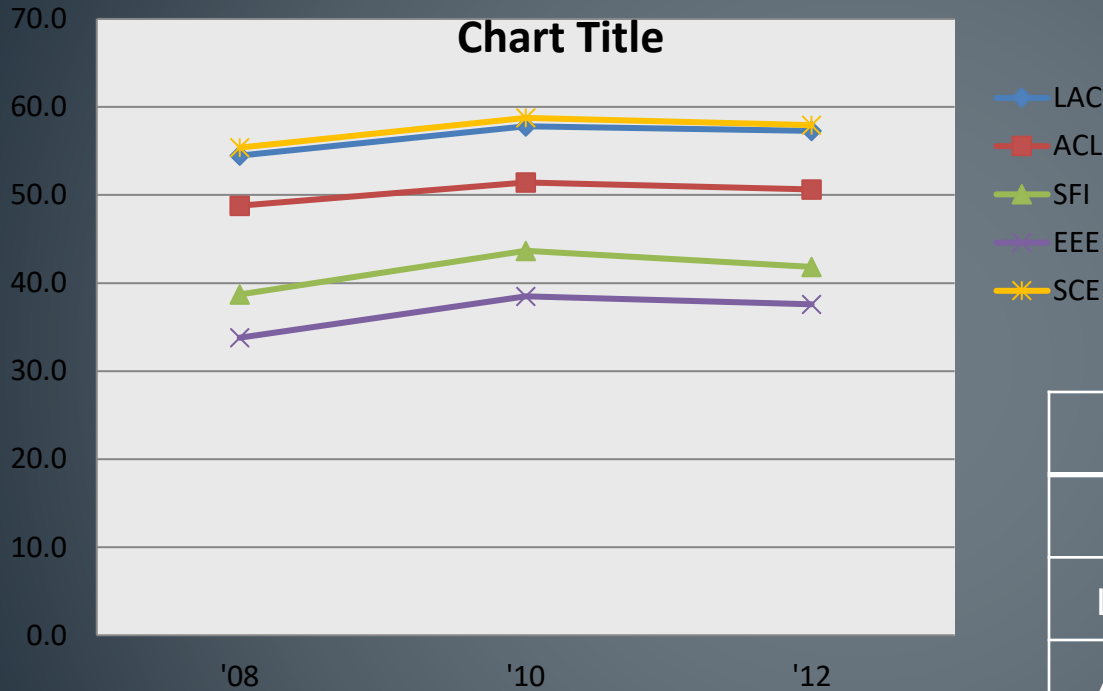
**Student – Faculty  
Interaction**

**Supportive  
Campus  
Environment**



# Multi-Year Benchmark Comparison

## First Year

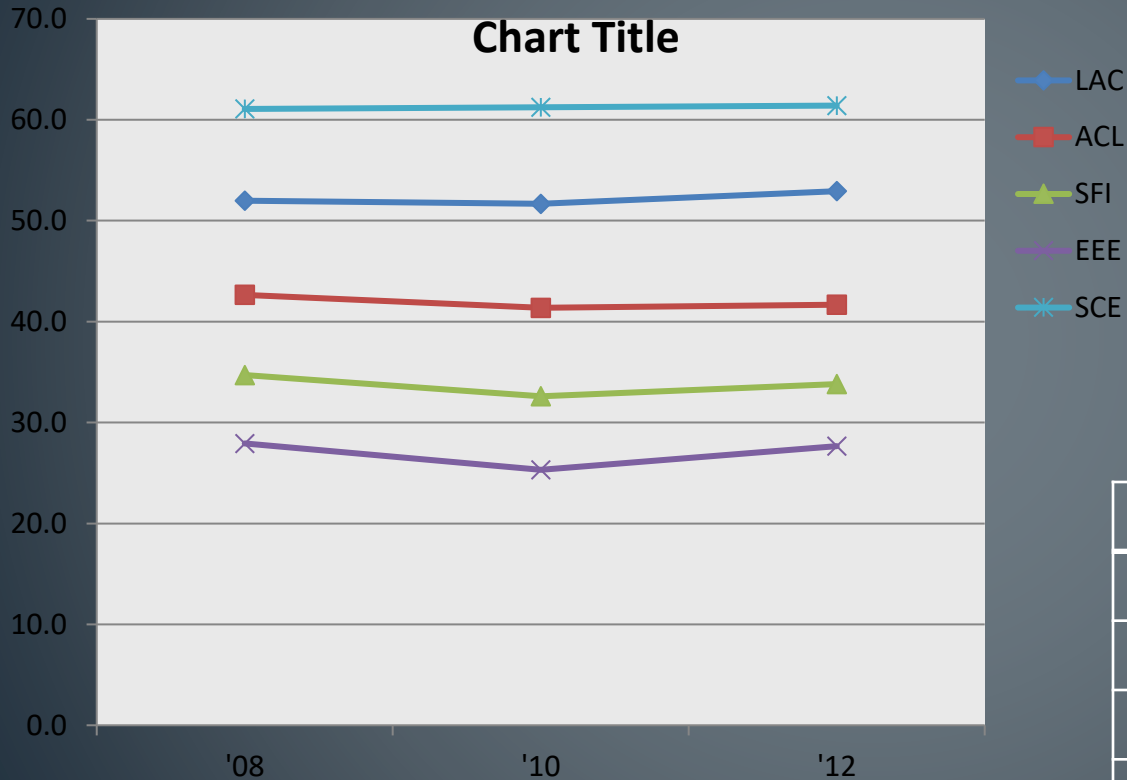


	'08	'10	'12
LAC	54.5	57.8	57.3
ACL	48.8	51.4	50.7
SFI	38.7	43.7	41.8
EEE	33.8	38.5	37.6
SCE	55.4	58.8	57.9



# Multi-Year Benchmark Comparison

## Seniors



	'08	'10	'12
LAC	52.0	51.7	52.9
ACL	42.6	41.4	41.7
SFI	34.7	32.6	33.8
EEE	27.9	25.3	27.6
SCE	61.1	61.2	61.4



# How do we do in questions related to diversity?

Response from seniors (Often/Very Often)	WCU	Public
Had serious conversations with students of a different race or ethnicity than your own.	55%	52%
Had serious conversations with students who are very different from you in terms of their religious beliefs, political opinions, or personal values.	55%	54%
Encouraging contact among students from different economic, social, and racial or ethnic backgrounds.	50%	51%
Understanding people of other racial and ethnic backgrounds.	54%	55%
Diverse perspectives and global citizenship	46%	N/A



# To what extent WCU prepared you

Seniors answering <i>Quite a bit/Very much</i>	WCU	Public
Writing clearly and effectively	76%	75%
Speaking clearly and effectively	73%	71%
Acquiring job or work-related knowledge and skills	76%	74%
Thinking critically and analytically	86%	86%
Solving complex real-world problems	61%	63%
Contributing to the welfare of your community	47%	47%
Voting in local, state, or national elections	28%	28%
Working effectively with others	79%	78%

# How are doing in preparing our students to work effectively with others?

- Worked with classmates **outside of class** to prepare class assignments (*Often/very often*)
  - FY 33% **31%** 34%      SY 45% **56%** 52%
- Have worked on a research project with a faculty member outside of course or program requirements
  - FY 6%    **3%** 3%      SY 10% **15%** 15%
- Worked with faculty members on activities other than coursework (committees, orientation, student life activities, etc.) *Those answering Never.*
  - FY 57% **56%** 58%      SY 47% **41%** 45%

# Are we teaching students to make connections and think critically?

During the current school year, how often have you (% saying often/very often)	FY	SY
Learned something that changed the way you understand an issue or concept	59% 62% 61%	66% 71% 67%
Put together ideas or concepts from different courses when completing assignments or during class discussions	53% 56% 58%	71% 74% 72%
Examined the strengths and weaknesses of your own views on a topic or issue.	44% 44% 47%	54% 56% 57%

# Study Abroad

- Plan to or have studied abroad
  - Plan to do
    - FY 37% 34% 33%
  - Have done
    - SY 6% 8% 8%



# Use of Technology

	FY	SY
Used an electronic medium (listserv, chat group, Internet, instant messaging, etc.) to discuss or complete an assignment	47%	52%
	48%	59%
	53%	55%
WCU has prepared you for using computing and information technology	73%	74%
	69%	77%
	68%	73%
Used a web-based course management system to access the course syllabus, notes or assignments (Blackboard, WebCT, eCollege, etc.)	86%	83%
	92%	93%
	83%	90%

# Exercised or participated in physical fitness activities

	FY			SY		
Never	11%	11%	9%	12%	11%	12%
Sometimes	29%	28%	21%	35%	29%	33%
Often/Very	61%	61%	70%	53%	60%	57%



# Supportive Campus Environment

- **To what extent does WCU help students cope with non-academic responsibilities (work, family, etc.)?**
  - FY 40%    38%    34%
  - SY 20%    27%    26%
- **To what extent does WCU provide the support to thrive socially?**
  - FY 52%    50%    52%
  - SY 32%    38%    38%

(Quite a bit or very much)

# Quality of Interactions

- The quality of relationships with **faculty**
  - Helpful, available (4-7)
  - FY 90% 94% 91% SY 91% 94% 92%
- The quality of relationships with **administrative personnel and offices**
  - Helpful, considerate, flexible (4-7)
  - FY 78% 82% 83% SY 70% 75% 73%
- The quality of relationships with **other students**
  - Friendly, supportive, sense of belonging (4-7)
  - FY 93% 90% 92% SY 90% 93% 93%



# Advising

	First-Year			Senior-Year		
	2008	2010	2012	2008	2010	2012
Poor	5%	6%	5%	14%	12%	11%
Fair	21%	15%	14%	22%	21%	18%
Good	51%	50%	46%	39%	42%	40%
Excellent	23%	30%	35%	25%	25%	30%



- To what extent WCU has emphasized the importance of developing a relationship with an academic advisor who can assist you with your academic, degree and career planning?

FY 52% SY 42%

- Discussed selection of academic majors, minors, or academic concentrations with a faculty or staff member

FY 36% SY 35%

- Discussed career related topics such as internships, resumes, and references with a career services professional, faculty or other staff member

FY 21% SY 44%



# Progression toward a degree

- Changed your major (at least once)

37%

39%

- Delayed your graduation plans because courses were not available when needed (at least once)

28%

31%

2010 / 2012



# How would you evaluate your entire educational experience at this institution?

- Good or Excellent

• FY	89%	90%	92%
• Senior	84%	90%	86%

2008 / 2010 / 2012



# If you could start over again, would you go to the same institution you are now attending?

Probably Yes

FY – 46% / 41% / 38%

SY – 41% / 40% / 36%

Definitely Yes

FY – 40% / 45% / 50%

SY – 39% / 44% / 47%



# Significance of Means and Effect Size

- Just because a mean difference is statistically significant doesn't mean that the result is relevant or important.
- Effect size indicates the “practical significance” of the mean difference.
- In practice, an effect size of .2 is often considered small, .5 moderate, and .8 large.
- A positive sign indicates that WCU's institution's mean was greater, thus showing an affirmative result for us.
- A negative sign indicates we lag behind the comparison group, suggesting that the student behavior or institutional practice represented by the item may warrant attention.
- WCU results are very similar to those of other institutions of our type and size. Only one area showed a greater than .2 negative difference: use of technology.