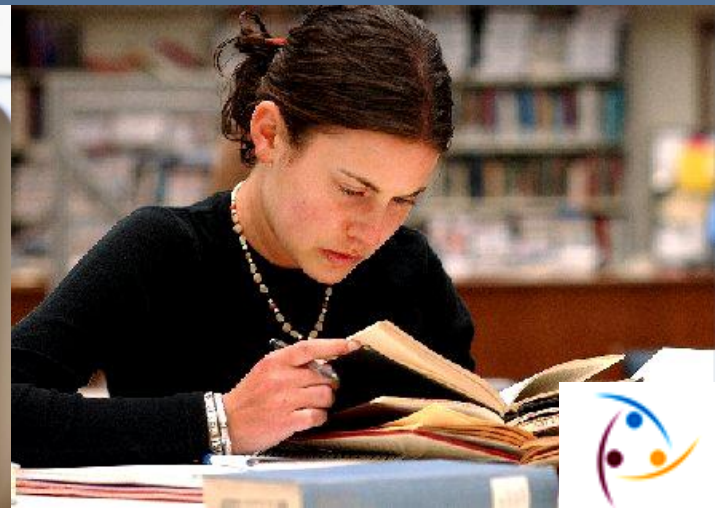
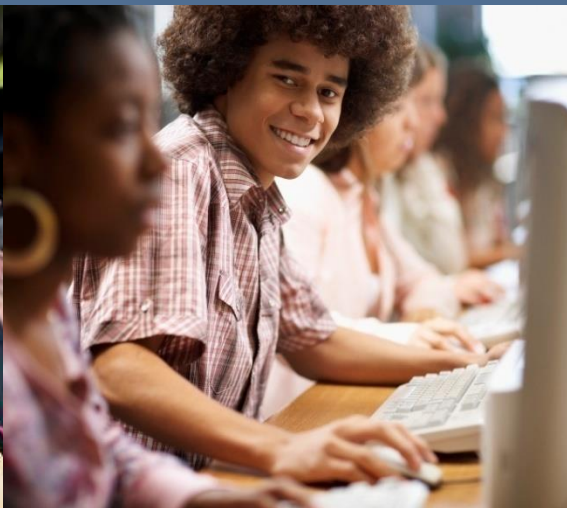




# Using NSSE Data in Student Affairs

West Chester University





# What is NSSE and What Does it Measure?

- ◆ A survey that provides an annual snapshot of student engagement in programs and activities that institutions provide for their learning and personal development.
  - Results provide an estimate of how undergraduates spend their time and what they gain from attending college
  - NSSE items represent empirically confirmed “good practices”; they reflect behaviors associated with desired outcomes of college



# NSSE Results

- ◆ Are **diagnostic**; to help institutions look holistically at undergraduate experience
- ◆ Help **pinpoint** aspects not in line with mission, or what institution expects
- ◆ Identify **weaknesses and strengths** in educational programs
- ◆ Help institutions know what to **focus on to improve** student learning and success



# NSSE Indicators of Effective Educational Practice

**Level of Academic Challenge**

**Active & Collaborative Learning**

**Enriching Educational Experiences**

**Student – Faculty Interaction**

**Supportive Campus Environment**



# How often have you ...

## ◆ Worked with classmates outside of class to prepare class assignments

– Never	FY	11%	SY	7%
– Sometimes		55%		48%
– Often/very often		33%		45%

## ◆ Talked about career plans with a faculty member or advisor

– Never	FY	18%	SY	18%
– Sometimes		47%		44%
– Often/very often		35%		38%



- ◆ The majority of first-year students (57%) have never worked with faculty members on activities other than coursework (committees, orientation, student life activities, etc.)
  - The percentage is not much better for seniors (47%)
- ◆ A significant number of students either plan to or have participated in a practicum, internship, field experience, co-op experience, or clinical assignment (FY 87%, SY 80%)
  - The numbers are similar for PASSHE schools (FY 84%, SY 82%)



# How often have you...

- ◆ Tutored or taught other students
  - Sometimes, often, very often
    - ◆ FY 46%                      45% PASSHE
    - ◆ SY 55%                      60%
  
- ◆ Participated in a community-based project (e.g. service learning) as part of a regular course
  - **Never**
    - ◆ FY 54%                      59%
    - ◆ SY 54%                      44%



# Participated in a community-based project as part of an organized university or student government project (not through a course)

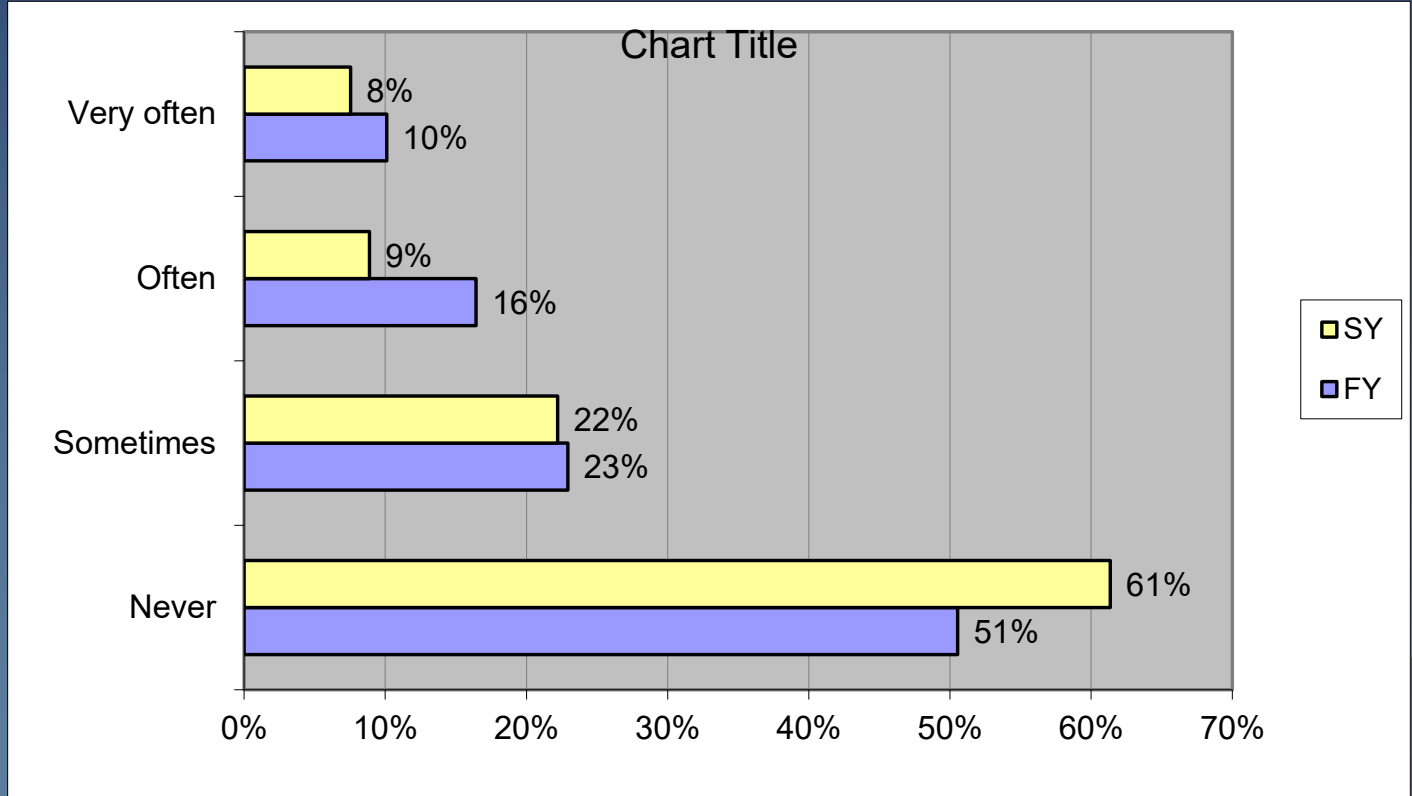
PASSHE

9%  
6%

13%  
12%

28%  
23%

50%  
56%

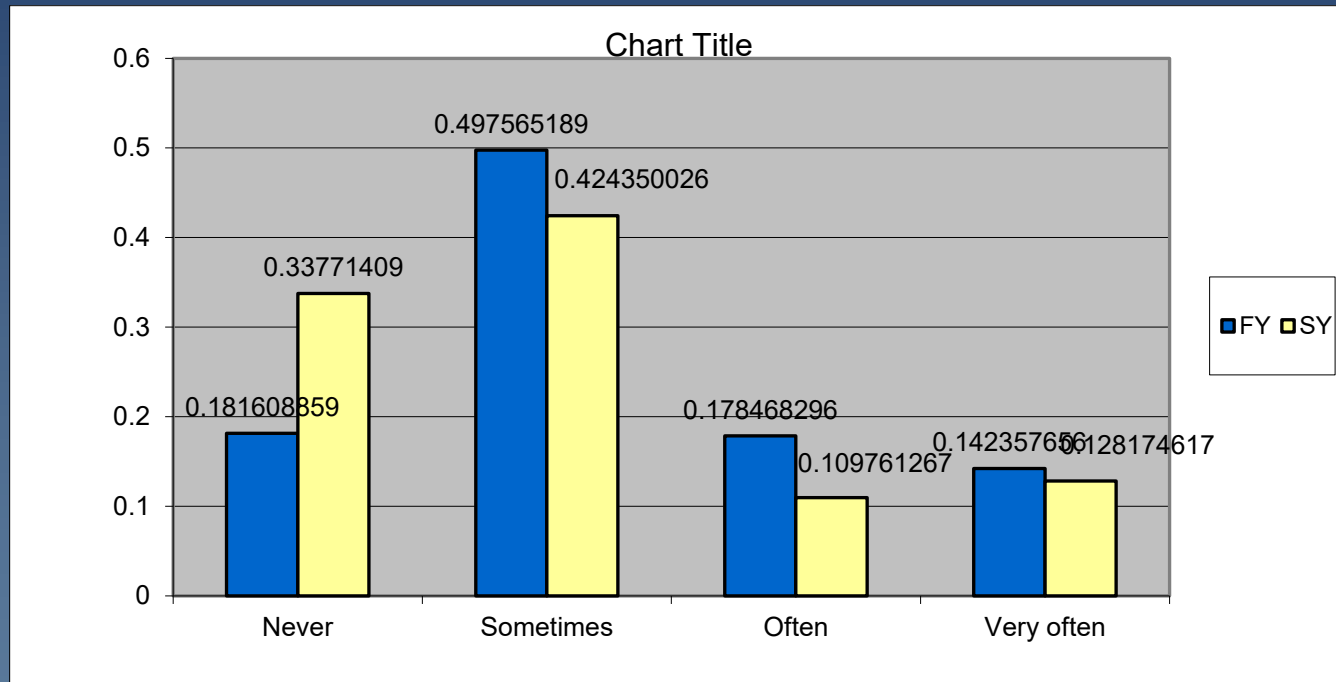




- ◆ The percentage of seniors who plan to or have done community service or volunteer work is
  - 70% for WCU seniors
  - 75% for other PASSHE schools seniors



# Attended an art exhibit, play, dance, music, theater, or other performance



PASSHE

22/28

47/47

20/15

10/10



## Exercised or participated in physical fitness activities

	FY		SY	
Never	11%	10%	12%	12%
Sometimes	29%	27%	35%	32%
Often/Very	61%	63%	53%	57%

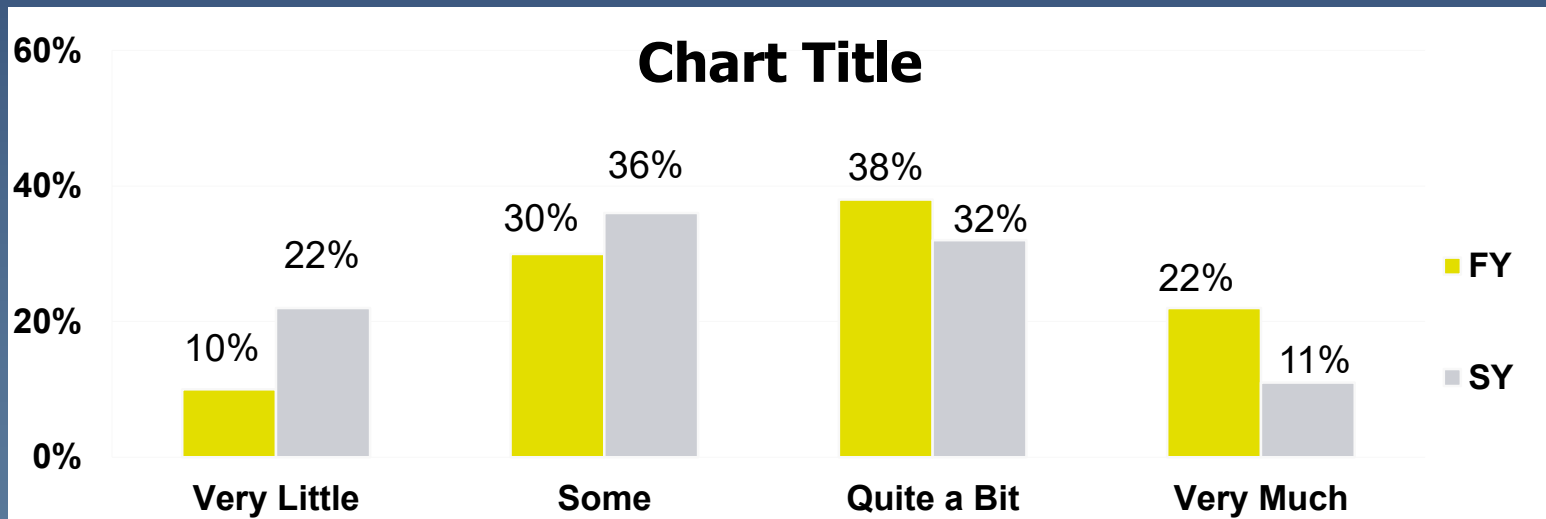
## Participated in activities to enhance your spirituality (worship, meditation, prayer, etc.)

	FY		SY	
Never	52%	50%	51%	47%
Sometimes	26%	28%	26%	28%
Often/Very	21%	23%	23%	26%



# Interaction with Other Students

- ◆ To what extent does the university encourage contact between students from different economic, social, and racial or ethnic backgrounds?



PASSHE

12/18

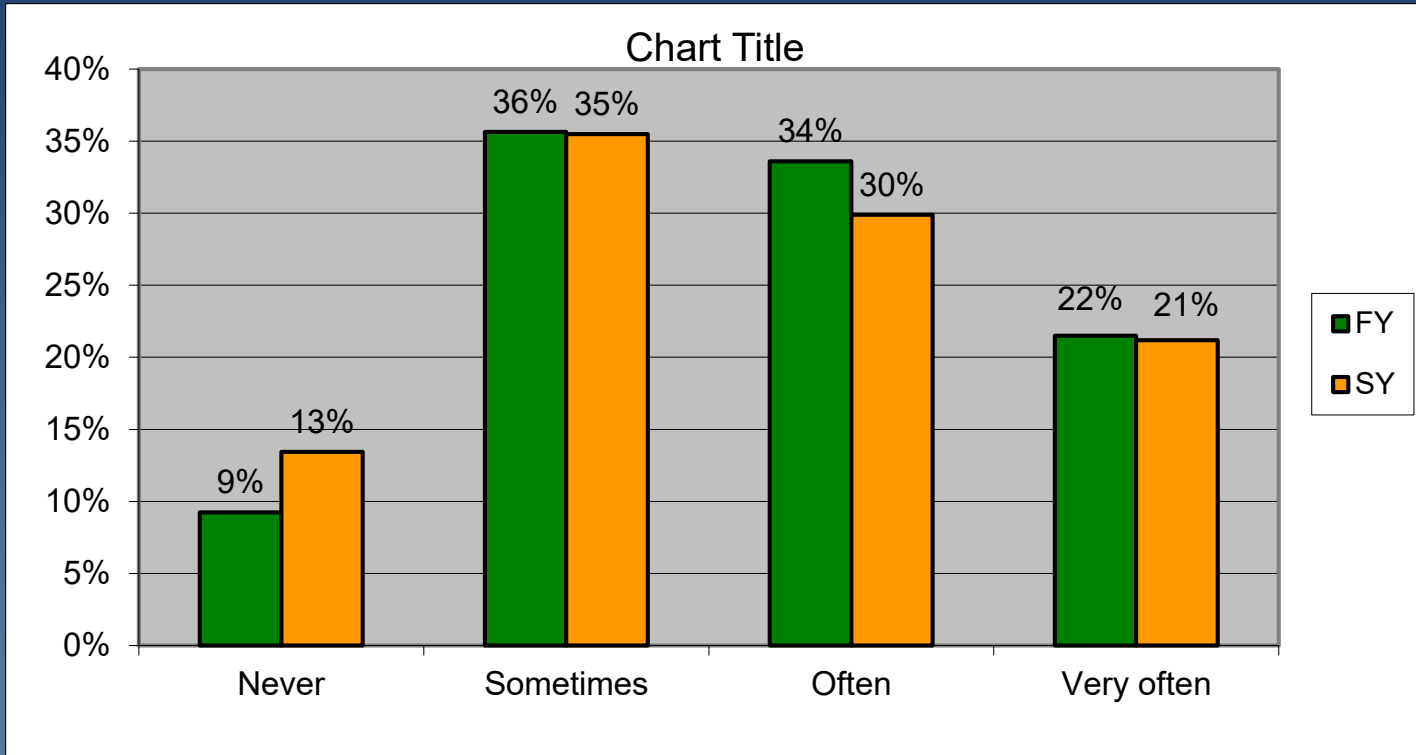
33/38

35/29

20/16



# Had serious conversations with students of a different race or ethnicity than your own



PASSHE

17 / 13

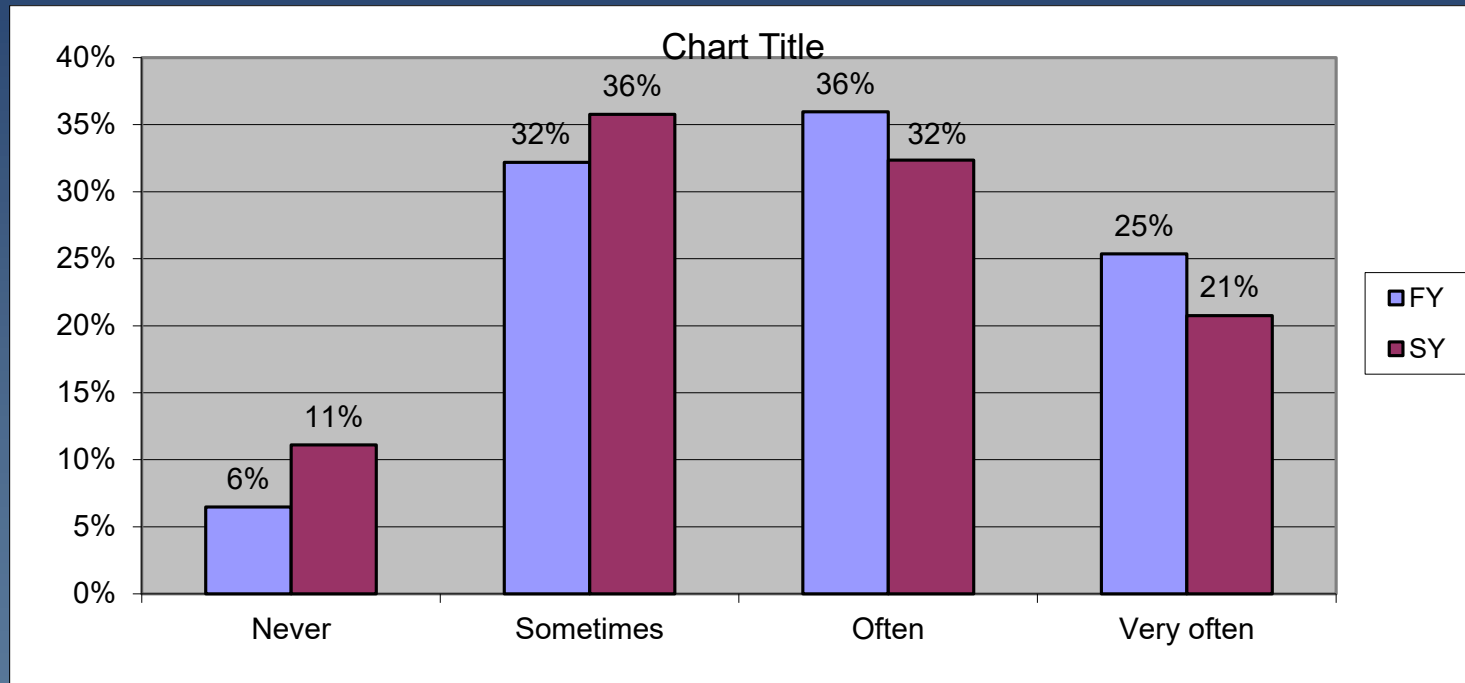
36 / 39

26 / 27

21 / 21



# Had serious conversations with students who are very different from you in terms of their religious beliefs, political opinions, or personal values



PASSHE

11 / 10

35 / 37

29 / 30

24 / 24

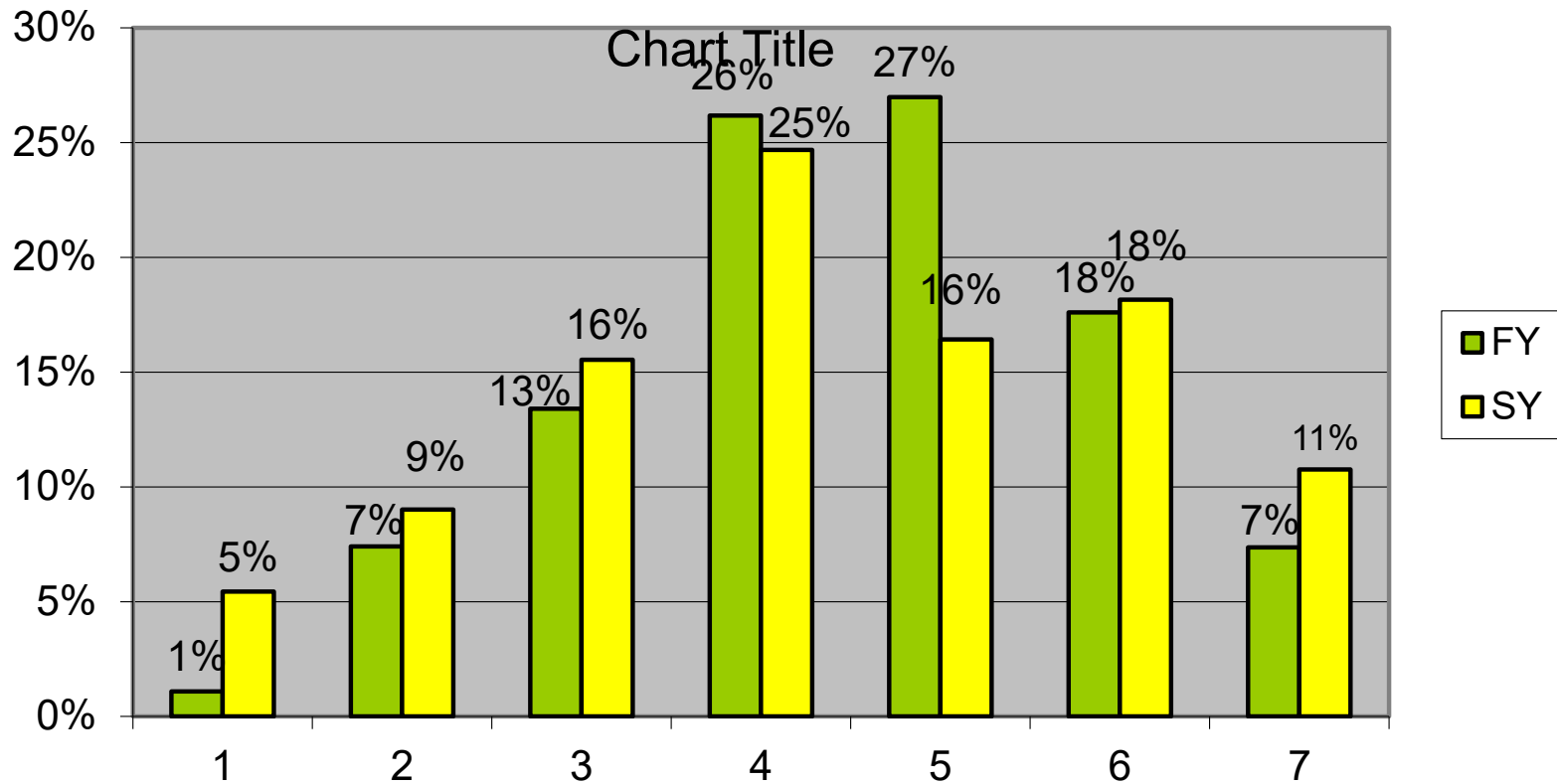


# Quality of Interactions

- ◆ How would you rate the quality of relationships with faculty?
  - Unavailable, unhelpful, unsympathetic (1-3) = 9%
  - Helpful, available (4-7) = 91%
  
- ◆ How would you rate the quality of relationships with administrative personnel and offices?
  - Unhelpful, inconsiderate, rigid (1-3) = 26%
  - Helpful, considerate, flexible (4-7) = 74%



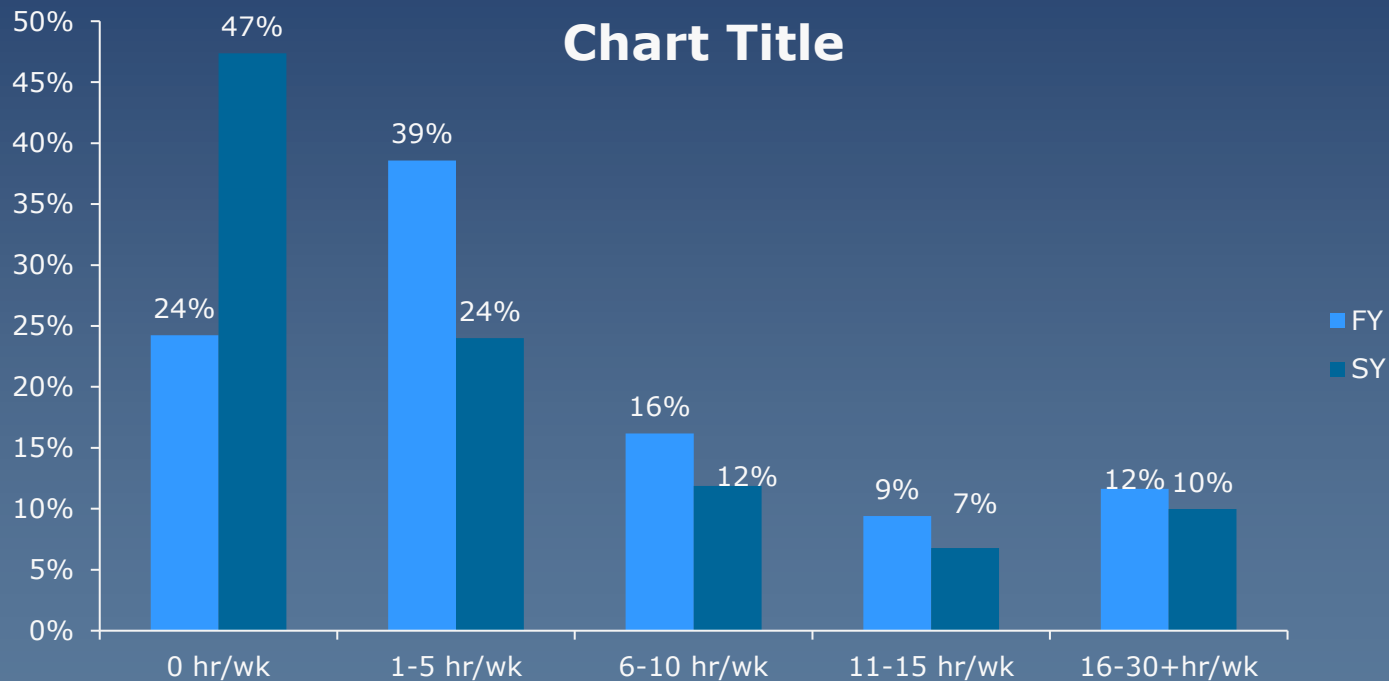
# Quality of relationships with administrative personnel and offices





# Participation in co-curricular activities

(organizations, campus publications, student government, fraternity or sorority, intercollegiate or intramural sports, etc.)



PASSHE

38/36

29/32

14/14

7/7

12/11



# Amount of time spent in

## ◆ Preparing for class

– 11+ hr/wk      FY 48%      SY 50%

## ◆ Working for pay on campus

– 6+ hr/wk      FY 15%      SY 16%

## ◆ Working for pay off campus

– None      FY 70%      SY 24%

– 6+ hr/wk      FY 24%      SY 72%

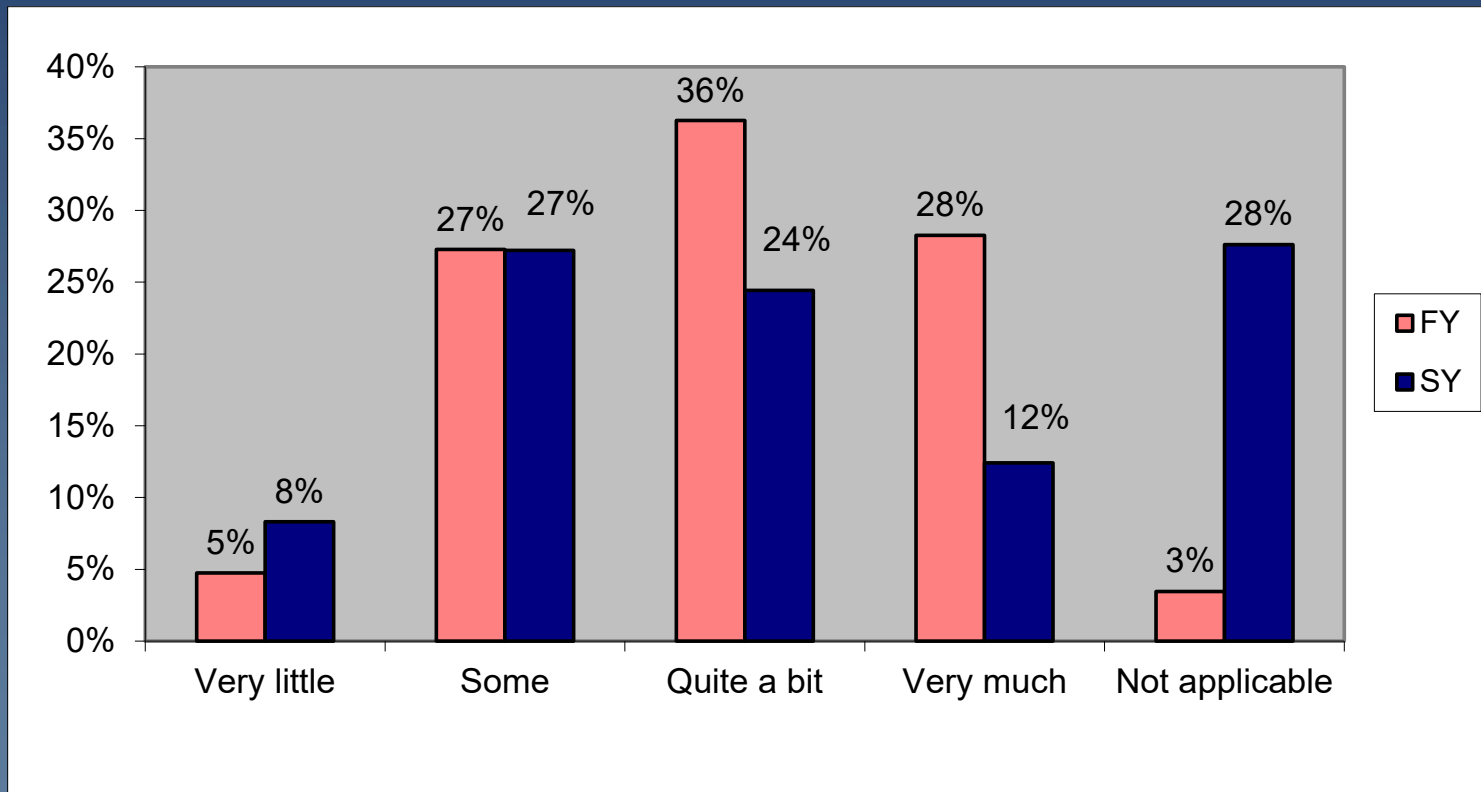
## ◆ Relaxing and socializing

– 1-10 hr/wk      FY 50%      SY 59%

– 16+ hr/wk      FY 26%      SY 22%



# To what extent does the campus provide a residential experience that facilitates adjustments to college?





# To what extent does WCU provide a safe environment for students by providing features and services that enhance safety?

	<i>FY</i>		<i>SY</i>	
Very little/Some	25%	21%	42%	29%
Quite a bit	38%	38%	31%	39%
Very much	36%	39%	25%	30%

WCU / PASSHE



Overall, how would you evaluate the quality of academic advising you have received at your institution?

	FY			SY		
	WCU	PA	Car	WCU	PA	Car
Poor	5%	6%	6%	14%	10%	11%
Fair	21%	17%	19%	22%	19%	22%
Good	51%	51%	48%	39%	42%	41%
Excellent	23%	26%	27%	25%	29%	26%



# How would you evaluate your entire educational experience at this institution?

## ◆ Good or Excellent

- |             |     |
|-------------|-----|
| – 89% of FY | 86% |
| – 84% of SY | 84% |



# If you could start over again, would you go to the same institution you are now attending?

Definitely No / Probably No

FY – 13%                      18%

SY – 19%                      22%

Probably Yes

FY – 46/45%

SY – 41/40%

Definitely Yes

40/37%

30/38%



# Using NSSE to Assess Engagement in Student Affairs

- ◆ **Evidence about quality of student experience**
  - Indicators at item level
  - Institutional emphasis on attending campus events (10 f)
  - Hours spent on co-curricular activities (9d)
  - Diversity Experiences (1 e, u, v)
  - Compare differences by gender, race-ethnicity, students in learning communities, place of residence, work on/off campus, fraternity/sorority membership by hours of co-curricular involvement etc.



# Student Affairs Questions that NSSE Can Answer

- ◆ Do NSSE results match our mission?
- ◆ Are we meeting our expectations for having a supportive campus environment?
- ◆ Since implementing a new multicultural education initiative and expanding diversity programming, has our score on the diversity scale changed?
- ◆ Are FYs who withdraw from the institution different in terms of engagement than students who are retained?



# Student Affairs Assessment with NSSE: Where To Start?

- 1. Start with campus concerns, then go to the data**
  - What burning questions do you have about our students?
  - What are the hot topics on our campus?
  - How can these data feed you with information on those topics?
- 2. How are we stacking up in terms of NSSE benchmarks, and educational practices of interest to our campus?**



# Making Sense of Data: Two Approaches

- ◆ Most valued activities
  - What is most valued at WCU, in departments?
  - What does the data show?
- ◆ Eliminate “Nevers”
  - Work on reducing or eliminating reports by students of never doing specific engagement activities



# NSSE Findings & Student Affairs

## ◆ **Functional Areas**

- Career Services/Advising
- First Year Programs/Orientation
- Multicultural programs
- Residential Life
- Student Activities/Fraternity and Sorority Life

## ◆ **Compare Results Within Your Institution**

- Compare item differences by gender, race-ethnicity, students in learning communities, place of residence, work on campus/off campus, fraternity and sorority affiliation, first-generation students